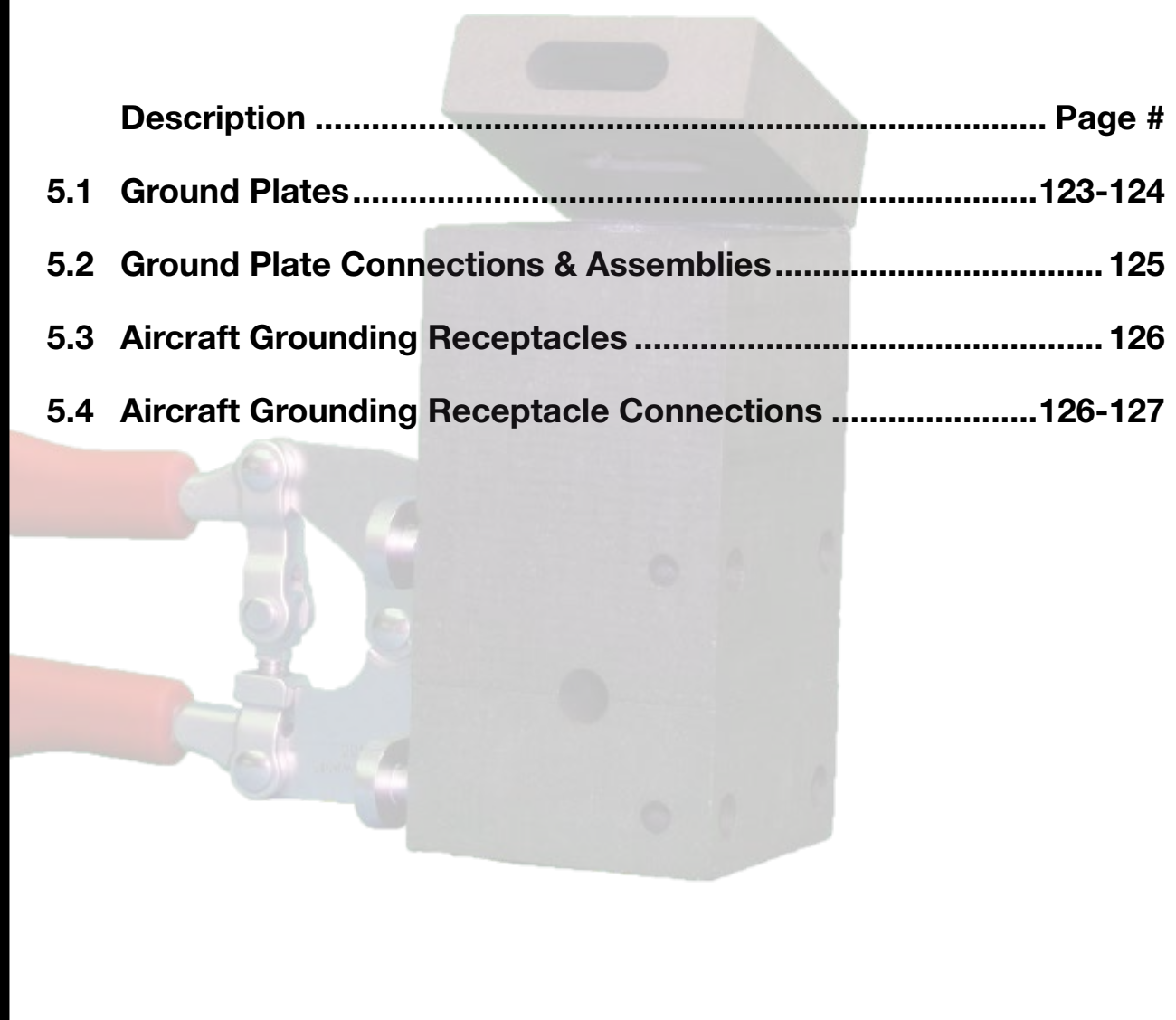


Section 5

Ground Plates & Aircraft Grounding Receptacles











| Description | Page # |
|---|---------|
| 5.1 Ground Plates | 123-124 |
| 5.2 Ground Plate Connections & Assemblies | 125 |
| 5.3 Aircraft Grounding Receptacles | 126 |
| 5.4 Aircraft Grounding Receptacle Connections | 126-127 |







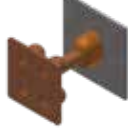


Connecting Power to Your World™



GROUND PLATES & AIRCRAFT GROUNDING RECEPTACLES

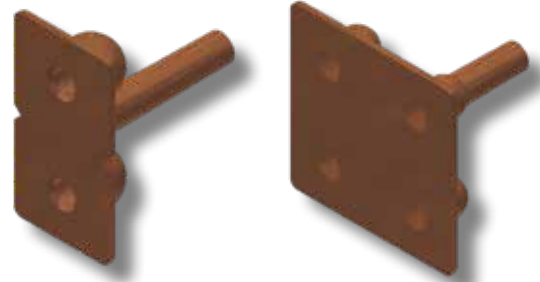
| Weld Type | | Page # |
|---|---------------------|--------|
|  | AC-1 | 127 |
|  | AC-2 | 127 |
|  | ACR-1 | 128 |
|  | ACR-2 | 128 |
|  | Aircraft Grd Recept | 126 |
|  | Aircraft Grd Eyelet | 126 |
|  | AR-1 | 128 |
|  | CR-27 | 125 |

| Weld Type | | Page # |
|--|------------|--------|
|  | CR-30 | 125 |
|  | CR-31 | 125 |
|  | CR-32 | 125 |
|  | CRS-1 | 124 |
|  | CRS-2 | 124 |
|  | Grd Plates | 123 |
|  | RS-3 | 124 |

GROUND PLATES

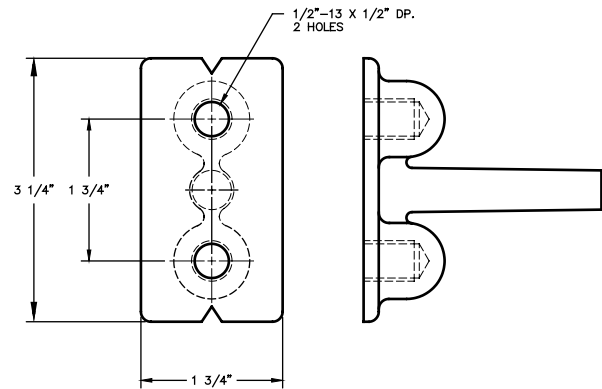
GROUND PLATES

When cast into concrete structures, these offer grounding points for equipment, machinery, etc. They are made from high quality copper alloy and can be thermOwelded easily to copper cable.



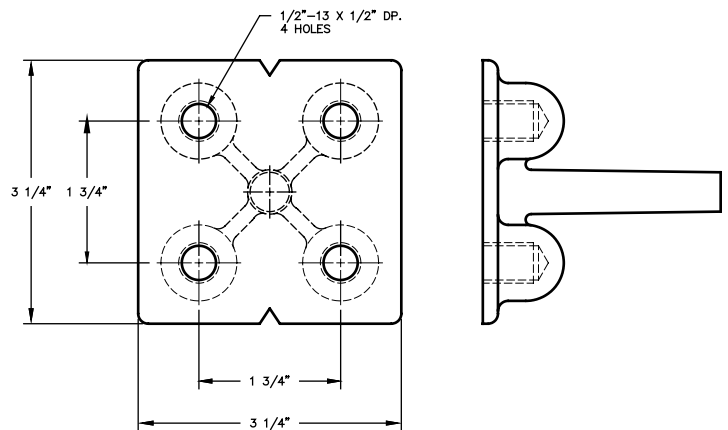
| Part # | Stud Size |
|------------|-----------|
| 38-2999-00 | 4/0 |

NEMA Spaced Holes

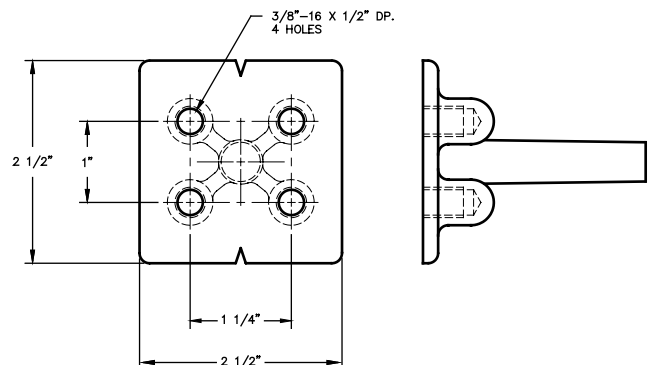


| Part # | Stud Size |
|------------|-----------|
| 38-4051-00 | 4/0 |
| 38-4178-00 | 500 Kcmil |

NEMA Spaced Holes



| Part # | Stud Size |
|------------|-----------|
| 38-2864-00 | 4/0 |



GROUND PLATES

GROUND PLATES

Use weld types CC-1 and CC-2 to connect copper cable to ground plates. Contact thermOweld® for mold numbers.

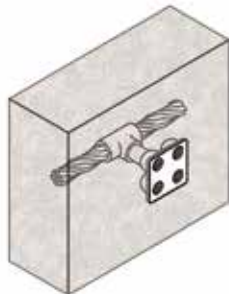
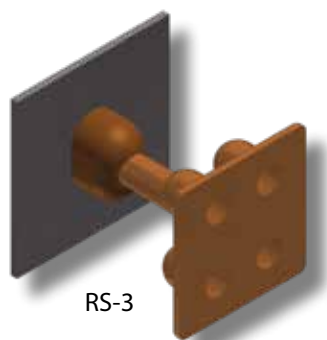
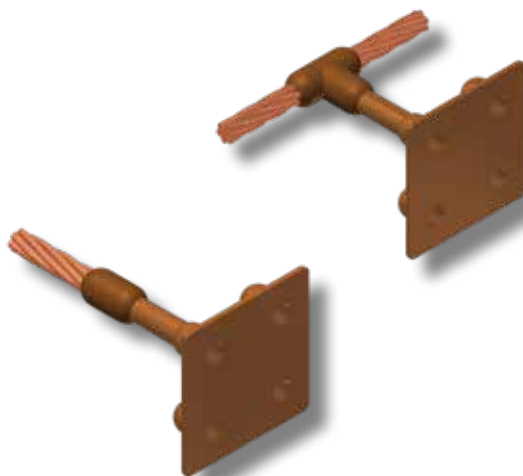
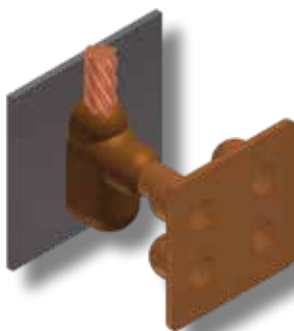


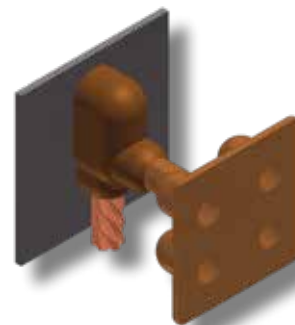
Illustration at left shows a ground plate installed in a concrete wall.



RS-3



CRS-2



CRS-1

MOLDS FOR AWG CONDUCTORS

| Ground Plate Part # | RS-3 Mold # | Price Key | Weld Metal | Handle Clamps | Lead Time |
|---------------------|-------------|-----------|------------|---------------|-----------|
| 38-2864-00 | M-6091 | 4 | 150 | B-106 | 2 |
| 38-2999-00 | M-6091 | 4 | 150 | B-106 | 2 |
| 38-4051-00 | M-6091 | 4 | 150 | B-106 | 2 |
| 38-4178-00 | M-6092 | 4 | 200 | B-106 | 4 |

* To order weld metal for use with EZ Lite Remote® insert TW before and EZ after weld metal number.

NOTE:

For structural purposes, weld types RS-3, CRS-1 and CRS-2 should only be used when the ground plate is to be encased in concrete.

MOLDS FOR AWG CONDUCTORS

| CRS-1† Mold # | Price Key | Weld Metal | Handle Clamps | Lead Time | Cable Size | CRS-2† Mold # | Price Key | Weld Metal | Handle Clamps | Lead Time |
|---------------|-----------|------------|---------------|-----------|------------|---------------|-----------|------------|---------------|-----------|
| M-6093 | 17 | 200 | B-106 | 4 | 1/0 | M-6101 | 17 | 200 | B-106 | 4 |
| M-6094 | 17 | 200 | B-106 | 2 | 2/0 | M-6102 | 17 | 200 | B-106 | 4 |
| M-6095 | 17 | 250 | B-106 | 2 | 3/0 | M-6103 | 17 | 250 | B-106 | 4 |
| M-6096 | 17 | 250 | B-106 | 2 | 4/0 | M-6104 | 17 | 250 | B-106 | 2 |
| M-6097 | 17 | 250 | B-106 | 4 | 250 MCM | M-6105 | 17 | 250 | B-106 | 4 |
| M-6098 | 17 | 2-150 | B-106 | 4 | 300 MCM | M-6106 | 17 | 2-150 | B-106 | 2 |
| M-6099 | 17 | 2-150 | B-106 | 4 | 350 MCM | M-6107 | 6 | 2-200 | B-107 | 4 |
| M-6100 | 6 | 2-200 | B-107 | 4 | 500 MCM | M-6108 | 6 | 500 | B-107 | 4 |

† These mold numbers are for use with Ground Plates 38-2999-00, 38-4051-00 and 38-2864-00.

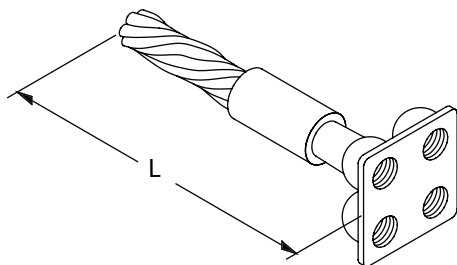
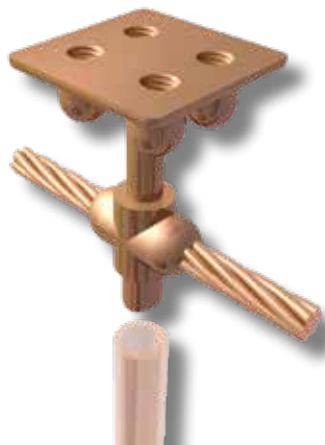
Contact thermOweld® for molds used with Ground Plate 38-4178-00.

* To order weld metal for use with EZ Lite Remote® insert TW before and EZ after weld metal number.

GROUND PLATES

GROUND PLATE ASSEMBLY

thermOweld® Pre-fabricated Ground Plate Assemblies come ready to splice into your grounding system. Types CR-31 and CR-32 are welded in an inverted position and the resulting riser is used to place the ground plate on top of 1/2" pipe. This helps position the ground plate flush with a floor slab.

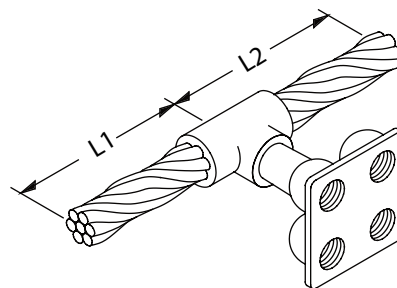


CR-27

| Ground Plate | Type CR-27 Assy. |
|--------------|------------------|
| 38-2864-00 | 38-4529-†‡ |
| 38-2999-00 | 38-4531-†‡ |
| 38-4051-00 | 38-4532-†‡ |
| 38-4178-00 | 38-4533-†‡ |

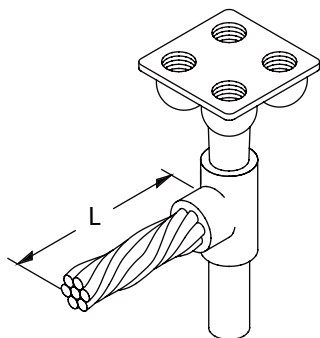
For the complete part number replace with corresponding number for cable size and corresponding letter for cable length. Contact thermOweld® for cable sizes and lengths not shown.

Example: 38-4524-5C would be a CR-32 type with a 38-2864-00 ground plate and a 4/0 str pigtail, 18" (L1) + 18" (L2) long for a total length of 36".



CR-30

| Ground Plate | Type CR-30 Assy. |
|--------------|------------------|
| 38-2864-00 | 38-4534-†‡ |
| 38-2999-00 | 38-4536-†‡ |
| 38-4051-00 | 38-4537-†‡ |
| 38-4178-00 | 38-4538-†‡ |

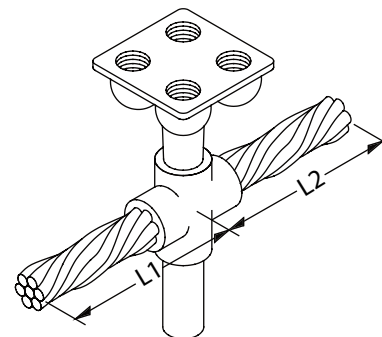


CR-31

| Ground Plate | Type CR-31 Assy. |
|--------------|------------------|
| 38-2864-00 | 38-4519-†‡ |
| 38-2999-00 | 38-4521-†‡ |
| 38-4051-00 | 38-4522-†‡ |
| 38-4178-00 | 38-4523-†‡ |

| † = CABLE SIZE | |
|----------------|-------------|
| 1 = #4 STR | 5 = 4/0 STR |
| 2 = #2 STR | 6 = 250 MCM |
| 3 = 1/0 STR | 7 = 350 MCM |
| 4 = 2/0 STR | 8 = 500 MCM |

| ‡ = LENGTH IN INCHES | |
|----------------------|----------|
| A = 6" | D = 24" |
| B = 12" | E = 36" |
| C = 18" | F = 48" |
| G = 10" | H = 96" |
| J = 60" | K = 72" |
| L = 144" | M = 30" |
| N = 120" | P = 240" |
| | R = 180" |

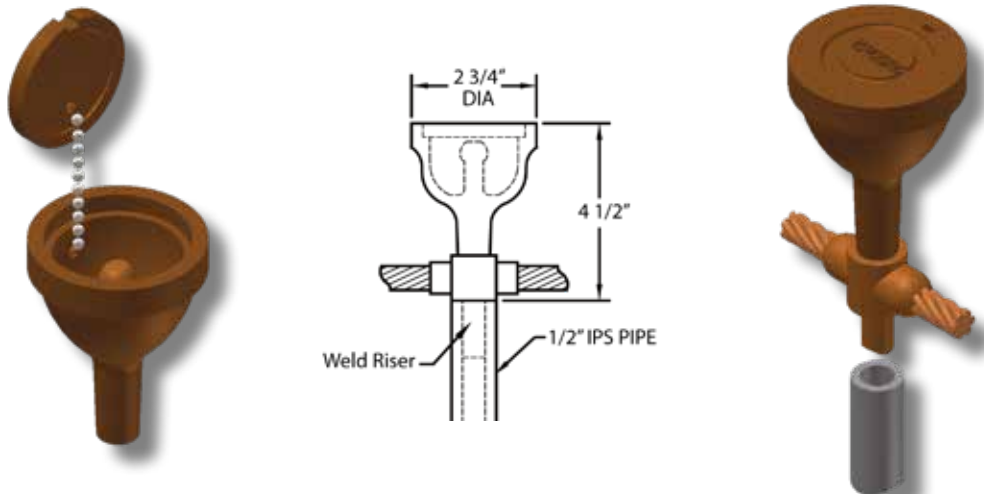


CR-32

| Ground Plate | Type CR-32 Assy. |
|--------------|------------------|
| 38-2864-00 | 38-4524-†‡ |
| 38-2999-00 | 38-4526-†‡ |
| 38-4051-00 | 38-4527-†‡ |
| 38-4178-00 | 38-4528-†‡ |

AIRCRAFT GROUNDING RECEPTACLE

Aircraft Grounding Receptacle 38-0119-00 is a copper alloy casting used for static grounding in aircraft refueling areas. The receptacle, when installed, is flush with the airport apron surface and provides a permanent, corrosion-proof static grounding connection. It can easily be attached to copper cable or ground rods in several configurations with a thermOweld® mold. Replacement studs available, part #38-0119-13.



Aircraft Grounding Eyelet

Cast bronze grounding eyelet designed with threads to screw onto sectional ground rods. Eyelet provides a static discharge tie down point for aircraft. Can withstand 9000 lbs. of pulling force. UL Listed.

| Aircraft Eyelet Grounding | |
|---------------------------|--|
| Catalog Number | Description |
| 38-7702-00 | Bronze Eyelet with 1/2" Internal Threads |
| 38-7702-01 | Bronze Eyelet with 5/8" Internal Threads |
| 38-7702-02 | Bronze Eyelet with 3/4" Internal Threads |



AIRCRAFT GROUNDING RECEPTACLE

AC TYPE MOLDS

Horizontal Cable to Aircraft Grounding Receptacle

AC-1 Type Molds are used to terminate a horizontal copper cable to a ground receptacle. AC-2 Type Molds are used to connect a horizontal through copper cable to a ground receptacle. thermOweld® types AC-1 and AC-2 are made with the receptacle in an inverted position. The resulting riser is then used to position the receptacle on top of 1/2" IPS pipe. Size range is #2 through 4/0 solid, ropelay or concentric stranded conductors.

| MOLDS FOR AWG CONDUCTORS | | | | | | | | | | |
|--------------------------|-----------|------------|---------------|-----------|------------|--------|-----------|------------|---------------|-----------|
| Mold # | AC-1 | | | | Cable Size | AC-2 | | | | |
| | Price Key | Weld Metal | Handle Clamps | Lead Time | | Mold # | Price Key | Weld Metal | Handle Clamps | Lead Time |
| M-6330 | 4 | 115 | B-106 | 2 | #2 | M-6338 | 4 | 115 | B-106 | 2 |
| M-6332 | 4 | 115 | B-106 | 4 | #1 | M-6339 | 4 | 115 | B-106 | 2 |
| M-6333 | 4 | 150 | B-106 | 4 | 1/0 | M-6341 | 4 | 150 | B-106 | 2 |
| M-6335 | 4 | 150 | B-106 | 2 | 2/0 | M-6342 | 4 | 150 | B-106 | 2 |
| M-6336 | 4 | 150 | B-106 | 2 | 3/0 | M-6343 | 4 | 200 | B-106 | 2 |
| M-6337 | 4 | 150 | B-106 | 2 | 4/0 | M-6344 | 4 | 200 | B-106 | 2 |



AC-2



AC-1

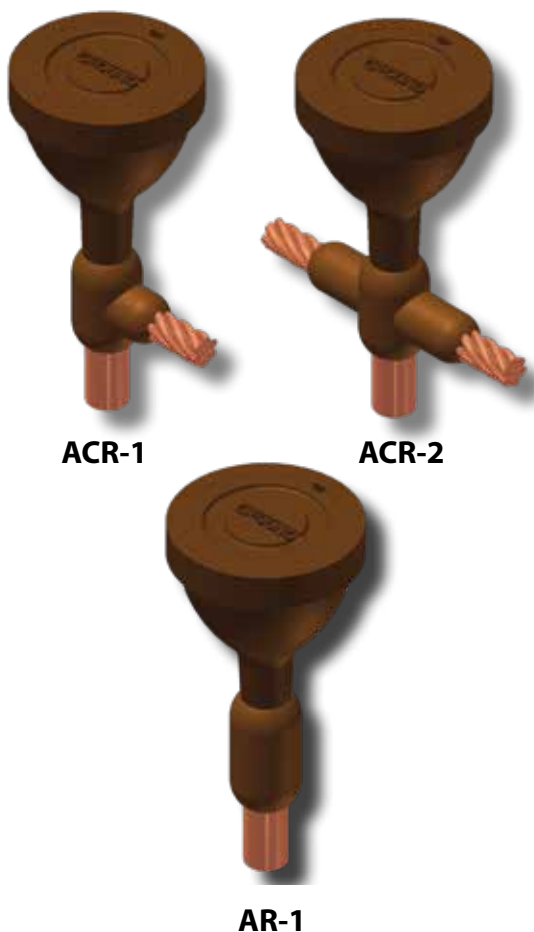
- For sizes not listed, contact thermOweld®.
- Molds listed are for concentric stranded cable. Add suffix "-S" to mold number for solid conductors.
- For heavy duty connections, contact thermOweld®.
- For molds with wear plates, see page 135.
- For expedited service, contact thermOweld®
- To order weld metal for use with EZ Lite Remote® insert TW before and EZ after weld metal number.
- Required Tools;
 - Handle Clamps w/ Flint Ignitor (see chart for correct handles)
 - 38-0309-00 ~ Flint Ignitor or 38-EZLT-RU EZ Lite Remote®
- Other recommended accessories;
 - 38-3922-00 ~ Mold Cleaning Brush
 - 38-0135-00 ~ Cable Cleaning Brush

AIRCRAFT GROUNDING RECEPTACLE

AR & ACR TYPE MOLDS

Horizontal Cable and Aircraft Grounding Receptacle to Ground Rod

Type AR-1 molds are used to weld a ground receptacle to the top of a ground rod. Types ACR-1 and ACR-2 are used to weld a horizontal cable and ground receptacle to the top of a ground rod.



| MOLDS FOR AWG CONDUCTORS | | | | | | |
|--------------------------|------------|--------|-----------|------------|---------------|-----------|
| ACR-1 | | | | | | |
| Ground Rod Size | Cable Size | Mold # | Price Key | Weld Metal | Handle Clamps | Lead Time |
| 5/8" | 1/0 | M-6305 | 8 | 2-200 | B-107 | 4 |
| | 2/0 | M-6306 | 8 | 2-200 | B-107 | 2 |
| | 3/0 | M-6307 | 8 | 2-200 | B-107 | 2 |
| | 4/0 | M-6309 | 8 | 2-200 | B-107 | 4 |
| 3/4" | 1/0 | M-6310 | 8 | 2-200 | B-107 | 2 |
| | 2/0 | M-6311 | 8 | 2-200 | B-107 | 2 |
| | 3/0 | M-6312 | 8 | 2-200 | B-107 | 2 |
| | 4/0 | M-6313 | 8 | 2-200 | B-107 | 2 |
| 1" | 1/0 | M-6314 | 8 | 500 | B-107 | 4 |
| | 2/0 | M-6315 | 8 | 500 | B-107 | 4 |
| | 3/0 | M-6316 | 8 | 500 | B-107 | 4 |
| | 4/0 | M-6317 | 8 | 500 | B-107 | 4 |

| ACR-2 | | | | | | |
|-----------------|------------|--------|-----------|------------|---------------|-----------|
| Ground Rod Size | Cable Size | Mold # | Price Key | Weld Metal | Handle Clamps | Lead Time |
| 5/8" | 1/0 | M-6318 | 8 | 2-200 | B-107 | 2 |
| | 2/0 | M-6319 | 8 | 2-200 | B-107 | 2 |
| | 3/0 | M-6320 | 8 | 2-200 | B-107 | 4 |
| | 4/0 | M-6321 | 8 | 2-200 | B-107 | 2 |
| 3/4" | 1/0 | M-6322 | 8 | 2-200 | B-107 | 2 |
| | 2/0 | M-6323 | 8 | 2-200 | B-107 | 2 |
| | 3/0 | M-6324 | 8 | 2-200 | B-107 | 2 |
| | 4/0 | M-6325 | 8 | 2-200 | B-107 | 2 |
| 1" | 1/0 | M-6326 | 8 | 500 | B-107 | 4 |
| | 2/0 | M-6327 | 8 | 500 | B-107 | 4 |
| | 3/0 | M-6328 | 8 | 500 | B-107 | 4 |
| | 4/0 | M-6329 | 8 | 500 | B-107 | 4 |

| AR-1 | | | | | | |
|-----------------|--------|-----------|------------|---------------|-----------|--|
| Ground Rod Size | Mold # | Price Key | Weld Metal | Handle Clamps | Lead Time | |
| 5/8" | M-6301 | 17 | 2-150 | B-106 | 2 | |
| 3/4" | M-6300 | 17 | 2-150 | B-106 | 4 | |
| 1" | M-6303 | 6 | 2-200 | B-107 | 4 | |

- For sizes not listed, contact thermOweld®.
- Molds listed are for concentric stranded cable. Add suffix "-S" to mold number for solid conductors.
- Molds listed are for copper clad ground rods. For welding to steel, stainless steel or galvanized steel ground rods add suffix "-N" to mold number.
- For heavy duty connections, contact thermOweld®.
- To order weld metal for use with EZ Lite Remote® insert TW before and EZ after weld metal number.
- For molds with wear plates, see page 135.
- For expedited service, contact thermOweld®.
- Required Tools;
 - Handle Clamps w/ Flint Ignitor (see chart for correct handles), 38-0309-00 ~ Flint Ignitor or 38-EZLT-RU EZ Lite Remote®
- Other recommended accessories;
 - 38-3922-00 ~ Mold Cleaning Brush
 - 38-0135-00 ~ Cable Cleaning Brush
 - 38-0304-00 ~ File
 - 38-0330-00 ~ Cable Clamp